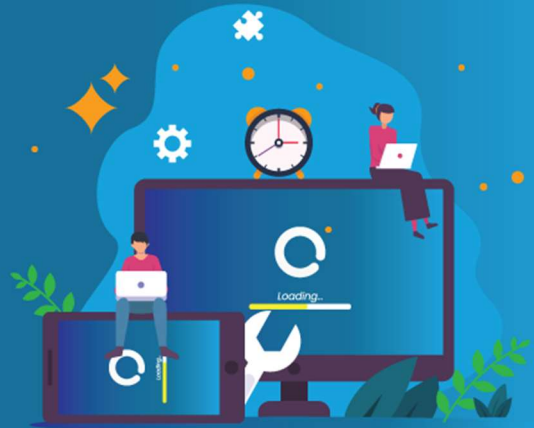


TIMS

Release Notes



TIMS 25.1 Feature Highlights

Driver Accreditation Enforcement

TIMS will now consider driver accreditation details when the Roster Clerk allocates future work in the TIMS Roster and when drivers sign on via the Driver Touch terminal. This feature is designed to give TIMS users peace of mind by ensuring that drivers with expired accreditation are not assigned to future work or able to sign on.

Actions required – Contact your TIMS consultant for further details and configuration guidance.

Shift Sheet Driver Notes Enhancements

Retrieving more information from Austrics to enrich the operational notes available to be displayed on TIMS shift sheets.

Actions required – None

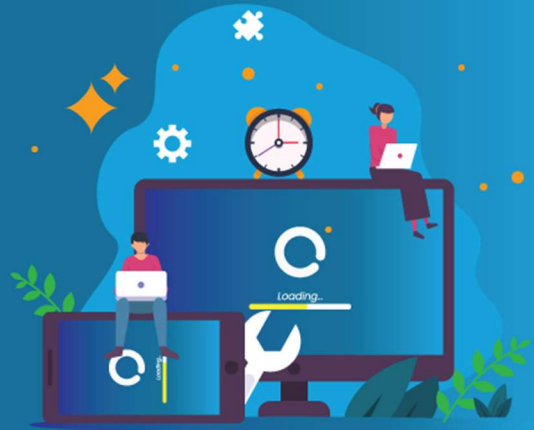
Multi-crew Scheduled Import Filter

Enhancements to the Austrics to TIMS Loader to now support the loading of shifts with multiple business units in a single import run.

Actions required – Contact your TIMS consultant for further details and configuration guidance.

TIMS

Release Notes

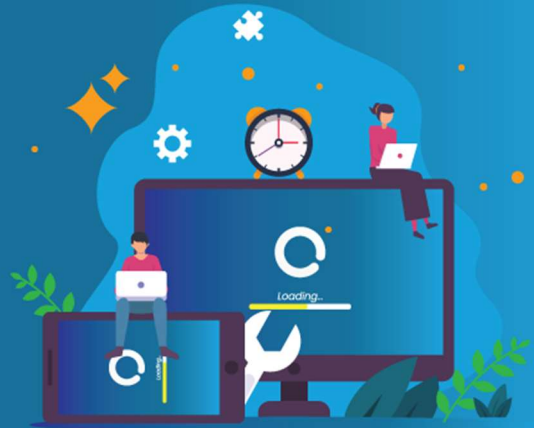


Features and Enhancements

Feature name	Description
Driver accreditation enforcement	Drivers without valid authority to drive credentials will no longer be able to have future work allocated to them. This is to support our users with enforcing strict compliance measures
Shift Sheet Driver Notes Enhancements	Retrieving more information from Austriacs to enrich the operational notes available to be displayed on TIMS shift sheets.
Multi-crew schedule import filter	Support the importation of multiple crew schedules to create shifts with work from more than one business unit
Port Driver touch functionality to WebApp	Uplifting the Driver Touch functionality to modern technology to future proof and open the door for future improvements to the tool
Notification flag for inventory items	Enable custom notifications to be presented to a user when selecting inventory items in driver touch

TIMS

Release Notes



System Tweaks and Fixes

- Enforcing the Rate field in the Payroll transaction screen to ensure the calculate pays functionality is working appropriately
- Resolving the issue with the New odom change appearing in the Post Odom Changes form
- Resolved an issue with manually deleted lines in the Payroll Transaction screen causing Posting Error
- Resolved an issue with empty lines in the Payroll Transaction screen causing lines to not post
- Resolved an issue that was causing Creditor Transactions to not be created for super
- Improvements to error messages in the web driver terminal
- Improvements to the Future Booked Leave report to retrieve all relevant data
- General improvements to the web driver terminal usability
- Resolved a minor issue with how the Workshop Schedule interacts with daylight savings
- Improvements to the Timesheet Setting in Despatch regarding the Shift Sequence Numbers
- Improvements to the Work Orders to ensure labour hours are locked down once the Work Order has been posted
- Fixing shifts that run past midnight into a public holiday
- Fixed an issue with the TIMS tablet that would cause the app to occasionally freeze when clicking the CANCEL button to go back to the previous screen
- Fixed an issue with the Driver Touch displaying expired MISC shifts
- Fixed a visual bug on the Employee Super window relating to the field labels

TIMS

Release Notes

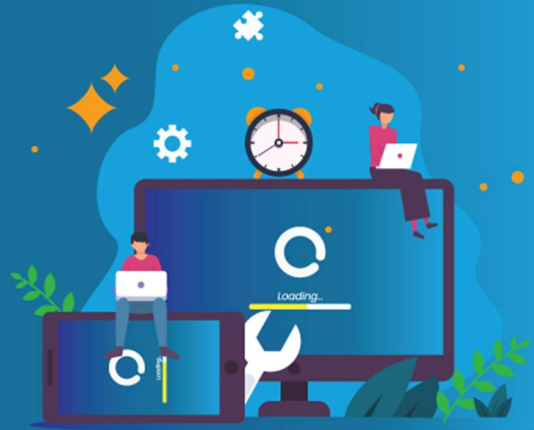


Technical uplift

- Postgresql 17 support
- Generic REST APIs: Create API generator script
- Update workshop tablet barcode scanner library
- 3rd party dependency updates
- TIMS client windows 11 support
- Uplift fuel loader framework

TIMS

Release Notes



What's coming in TIMS 25.2?

Employee Self Service APIs (ESS)

- Delivering a series of APIs that will make essential Employee Self Service (ESS) TIMS data available for integration with external ESS systems (e.g. Blink). Available via subscription only.